

PQI Data Log Transfer Procedure For The PQI Model 301

Step One: You will first need to set up a terminal program on the computer that you wish to perform the data log transfer on. The most common terminal program that comes with Windows is HyperTerminal. When you start up HyperTerminal it will ask you to set up a new connection.

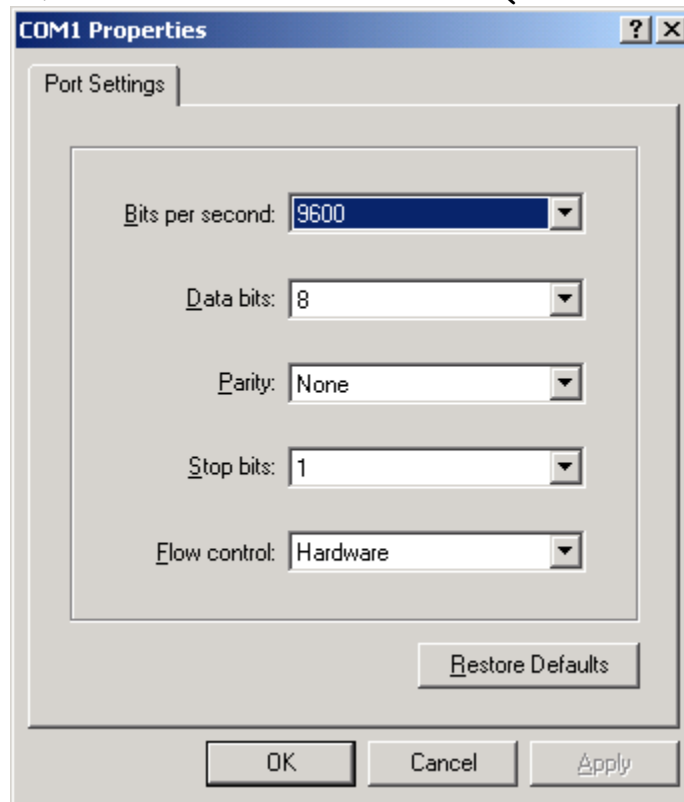


Once you have picked an icon and created a name for the connection it will need to be setup.



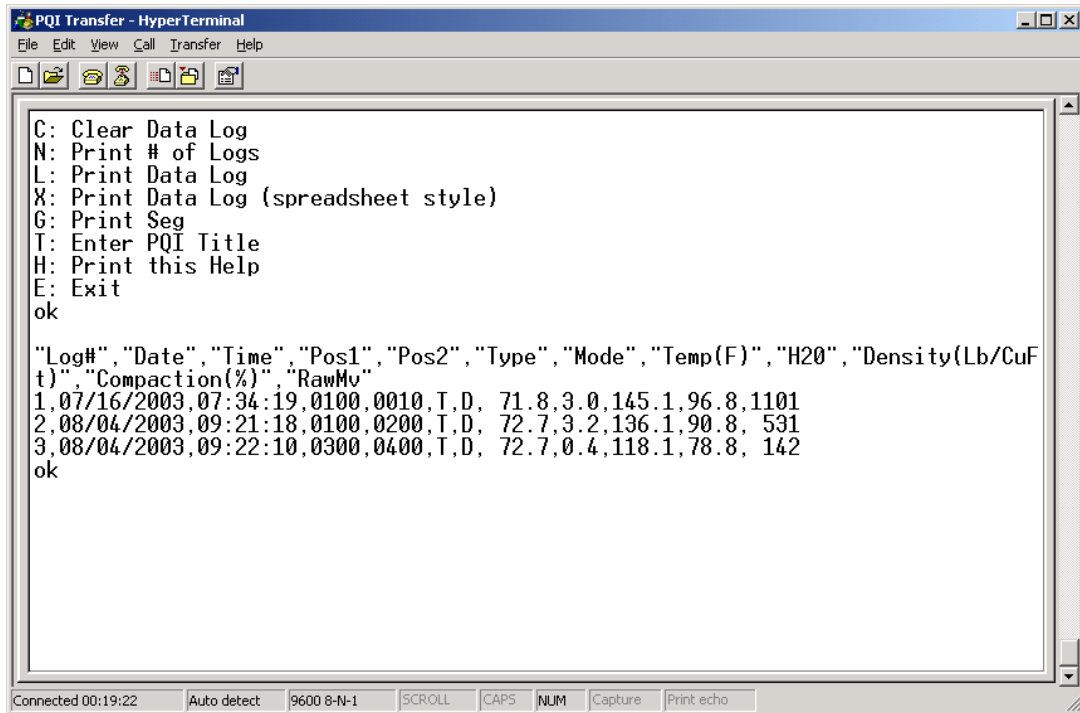
When the window comes up that is asking where the connection should connect to you will need to make sure that it is set to use one

of your open com ports. COM1 and COM2 are commonly available ports on a computer. In the example window COM1 was the available port on the computer. The settings are shown below that are required for a correct connection to the PQI.



- Step Two: Find a plain text editor on the computer and create a new document. A common text editor that comes with Windows is Notepad. Save the new document in a known location, as it will be needed later.
- Step Three: Open Excel which will create a new workbook. Save the workbook in a known location, as this will be needed later as well.
- Step Four: With the PQI on, plug the 9 pin serial cable coming from your computer into the data port on the back of the gauge near the handle. Navigate to the setup menu on the PQI and select number 6 which will place the gauge in remote mode. Go back to the terminal program that you setup in step one and press the H key on the computer keyboard. Doing so will create a list in the terminal window of all the available functions that you can use to control the PQI. Next you will want to press the X key as it will tell the PQI to send the data log information to the computer in spreadsheet style. Once the data has finished transferring to the computer you will need to

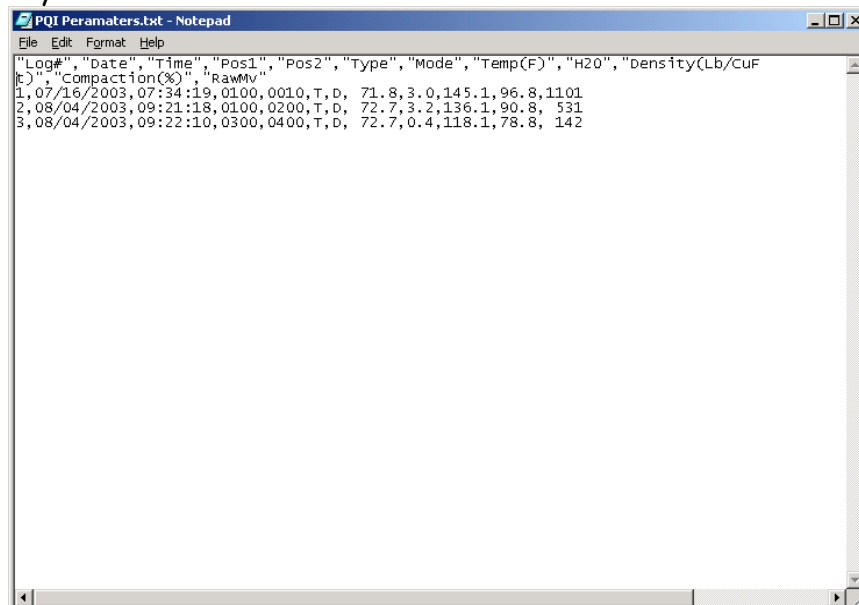
highlight and copy it. There is an example of what the data should look like below.



```
C: Clear Data Log
N: Print # of Logs
L: Print Data Log
X: Print Data Log (spreadsheet style)
G: Print Seg
T: Enter PQI Title
H: Print this Help
E: Exit
ok

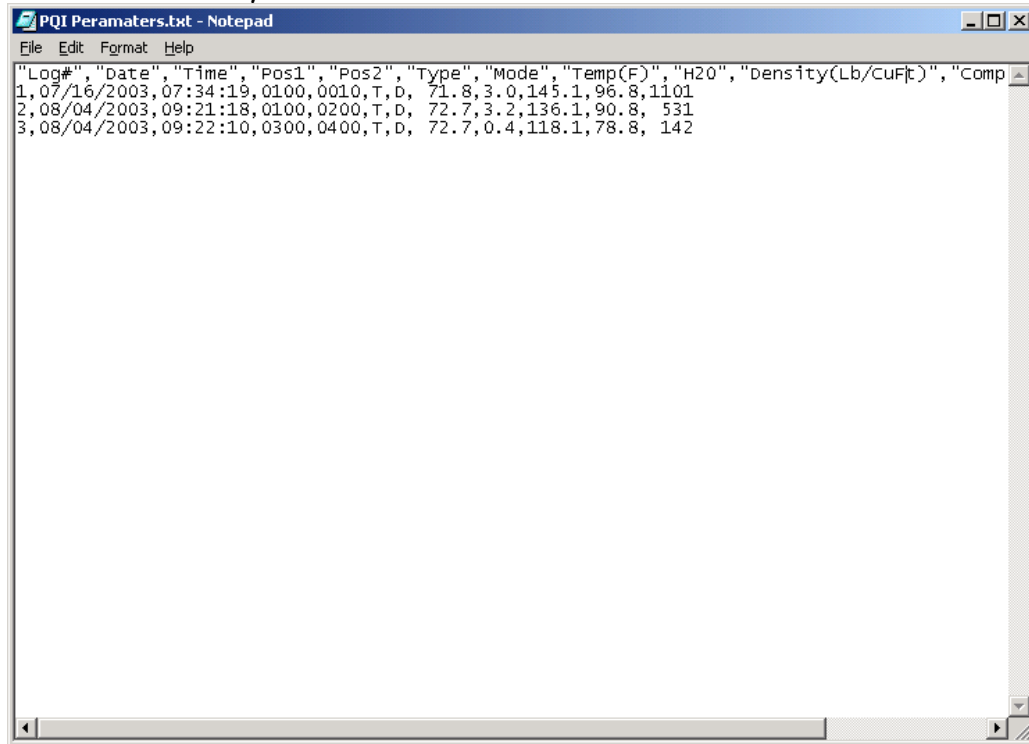
"Log#", "Date", "Time", "Pos1", "Pos2", "Type", "Mode", "Temp(F)", "H2O", "Density(Lb/CuFt)", "Compaction(%)", "RawMv"
1, 07/16/2003, 07:34:19, 0100, 0010, T, D, 71.8, 3.0, 145.1, 96.8, 1101
2, 08/04/2003, 09:21:18, 0100, 0200, T, D, 72.7, 3.2, 136.1, 90.8, 531
3, 08/04/2003, 09:22:10, 0300, 0400, T, D, 72.7, 0.4, 118.1, 78.8, 142
ok
```

Step Five: Switch to the text document that is open and paste the data to it that you just copied from the previous step. There will be a return that makes part of the Lb/CuFt label go to the second line that will need to be removed so that all the data label information will appear on one line of the text document. To remove the return, place your cursor at the end of the first line and press the delete key on the keyboard.

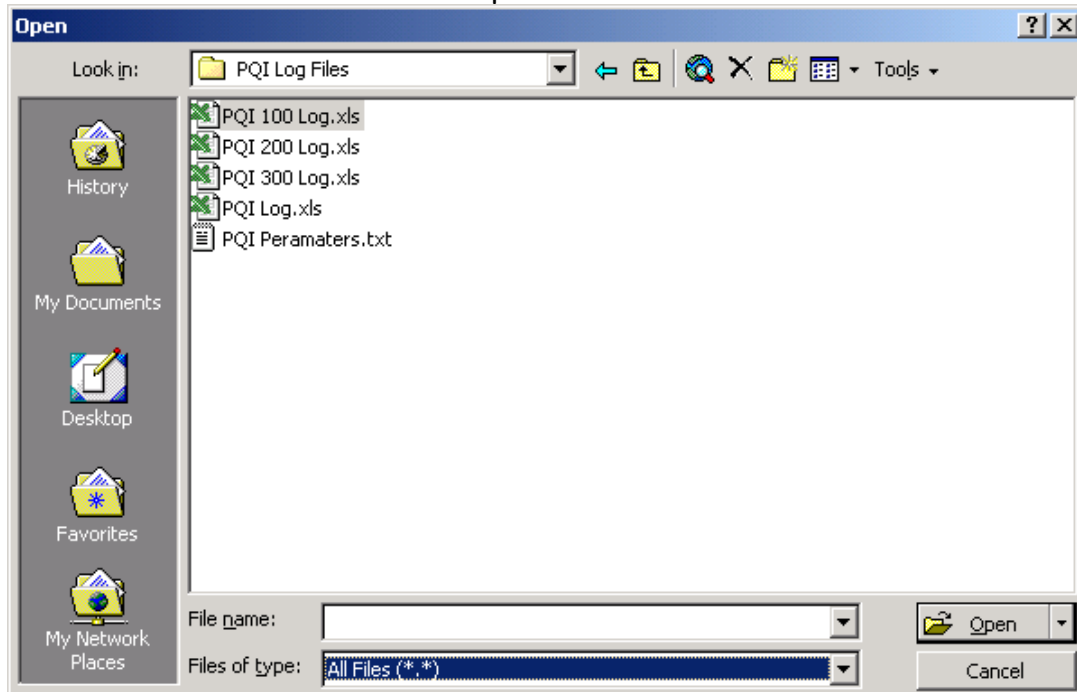


```
"Log#", "Date", "Time", "Pos1", "Pos2", "Type", "Mode", "Temp(F)", "H2O", "density(Lb/CuFt)", "Compaction(%)", "RawMv"
1, 07/16/2003, 07:34:19, 0100, 0010, T, D, 71.8, 3.0, 145.1, 96.8, 1101
2, 08/04/2003, 09:21:18, 0100, 0200, T, D, 72.7, 3.2, 136.1, 90.8, 531
3, 08/04/2003, 09:22:10, 0300, 0400, T, D, 72.7, 0.4, 118.1, 78.8, 142
```

It is necessary for the labels to be on one line so that they will import correctly into Excel. Once the data arrangement has been corrected you can save the text document.

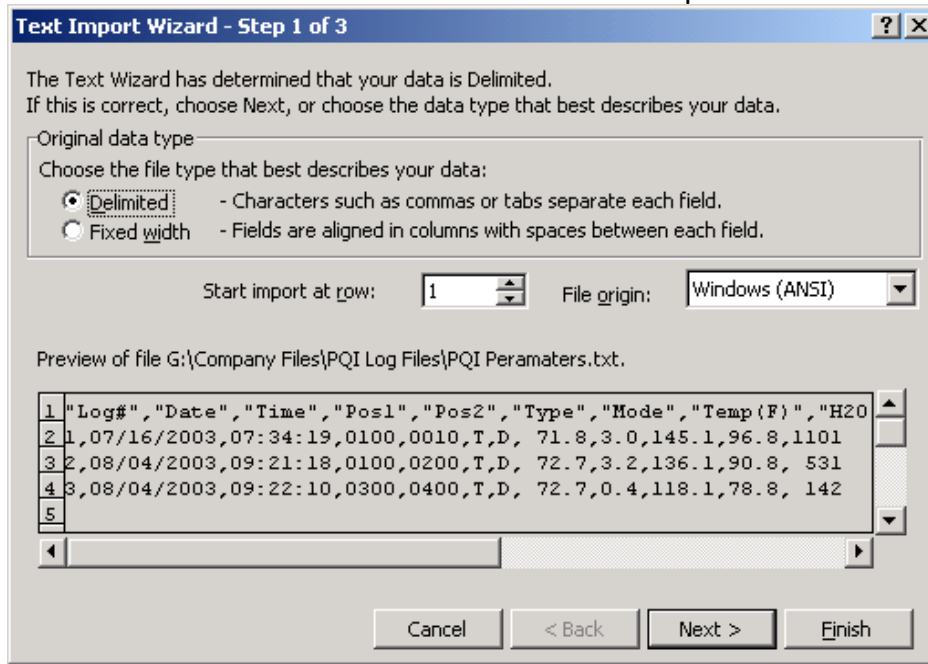


Step Six: Switch to Excel and select open.

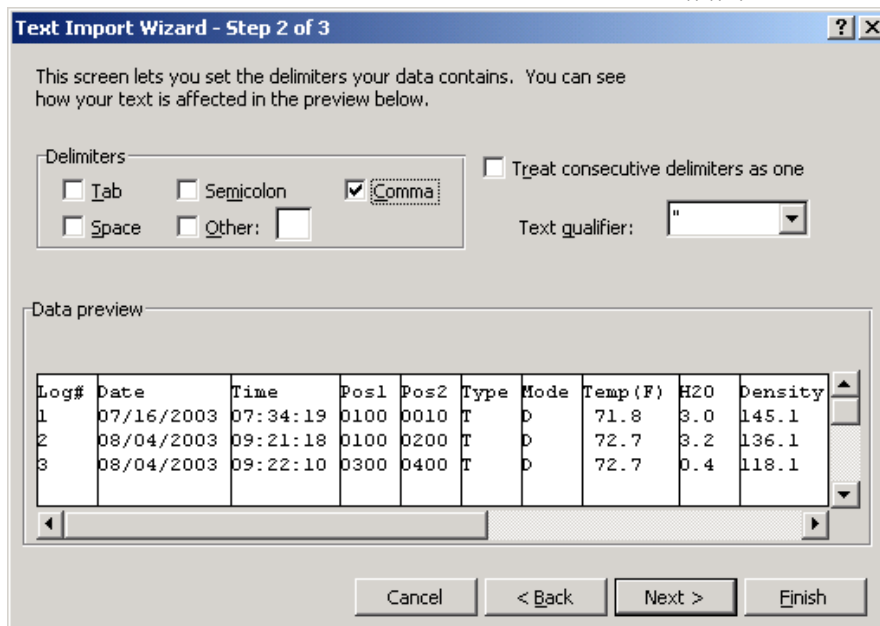


Navigate to the location that you have the text document saved and

open it. You will most likely have to change the file type that Excel is looking for in the file open dialog box from Excel Files to All Files before you will see the document. Once the text document has been opened Excel will realize that the file that you are trying to open is a delimited file and it will start the Text Import Wizard.



The first step of the wizard is allowing you to make the selection whether the data is delimited or fixed width. You will want to leave it on delimited. The next step will be asking what the delimiters are. You will want to uncheck tab and select comma.



The data preview window will change to show you what the data will look like once it is imported. At this point finish can be selected being that the last step of the wizard is not applicable to this application. Once the data has been imported it should look something like this.

The screenshot shows a Microsoft Excel spreadsheet with the following data:

Log#	Date	Time	Pos1	Pos2	Type	Mode	Temp(F)	H2O	Density(Lb/CuFt)	Compaction(%)	RawMv
1	07/16/03	07:34:19	100	10	T	D	71.8	3	145.1	96.8	1101
2	08/04/03	09:21:18	100	200	T	D	72.7	3.2	136.1	90.8	531
3	08/04/03	09:22:10	300	400	T	D	72.7	0.4	118.1	78.8	142